



Pioneer 1000 Rear Bumper Installation Instructions

We have tried to cover every detail of this installation as thoroughly as possible, but in the event that we missed something, please let us know. We really appreciate your business, and we hold customer satisfaction with high regard. Do not hesitate to give me a call if you need clarification or assistance with anything at all throughout your installation process.

-Jared Doster
936-581-2948

Liability Statement

Texas Tough Customs LLC's products are designed to best fit user's ATV/UTV under stock conditions. Adding, modifying, or fabricating any factory or aftermarket parts will void any warranty provided by Texas Tough Customs LLC and is not recommended. Texas Tough Customs LLC's products could interfere with other aftermarket accessories. If user has aftermarket products on machine, contact Texas Tough Customs LLC to verify that they will work together.

Although Texas Tough Customs LLC has hundreds of satisfied customers, users should be aware that installing lift kits, long travel, or suspension kits, tires, etc. will change the ride of machine and may increase maintenance and part wear. Operating any off-road machine while, or after, consuming alcohol and/or drugs increases risk of bodily harm or death. No warranty or representation is made as to this product's ability to protect user from severe injury or death. Texas Tough Customs LLC urges operators and occupants to wear a helmet and appropriate riding gear at all times.

By purchasing and installing Texas Tough Customs LLC's products, user agrees that should damages occur, Texas Tough Customs LLC will not be held responsible for loss of time, use, labor fees, replacement parts, or freight charges. Texas Tough Customs LLC, nor any 3rd party, will not be held responsible for any direct, indirect, incidental, special, or consequential damages that result from any product purchased from Texas Tough Customs LLC. The total liability of seller to user for all damages, losses, and causes of action, if any, shall not exceed the total purchase price paid for the product that gave rise to the claim.

Texas Tough Customs LLC will warranty only parts provided by Texas Tough Customs LLC. Any damage or problems with OEM housings, bearings, seals, or other manufacturers' products will not be covered by Texas Tough Customs LLC. Texas Tough Customs LLC parts and products are not warranted if item was not installed properly, misused, or modified.

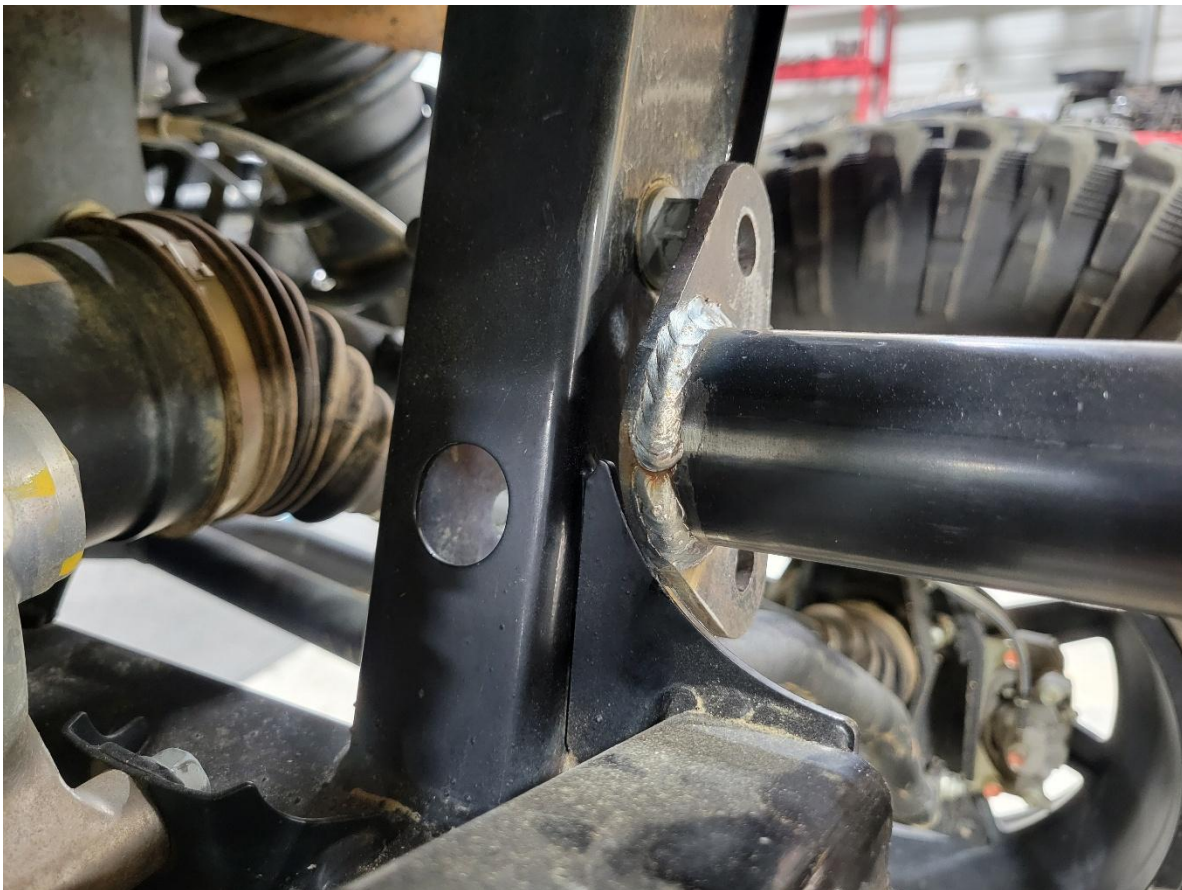
Installing, adding, modifying, or fabricating any factory or aftermarket product to your ATV/UTV may violate certain local, state, and federal laws. Be advised that laws vary depending on town, city, county, state, etc. Use of certain products on public streets, roads, or highways may be in violation law. The Buyer is solely and exclusively legally and personally responsible for any violation of the law by the installation or use of the product. You must abide by all local, state, and federal laws, including but not limited to vehicle safety, traffic laws, and ordinances. It is your responsibility to know the laws and how they apply to you.

The Buyer is responsible to fully understand the capability and limitations of his/her vehicle according to manufacturer specifications, warnings and instructions and agrees to hold Texas Tough Customs LLC harmless from any damage resulting from failure to adhere to such specifications, warnings and/ or instructions. The Buyer is also responsible to obey all applicable federal, state, and local laws and ordinances when operating his/her vehicle while using this product, and the Buyer agrees to hold Texas Tough Customs LLC harmless from any violation thereof.

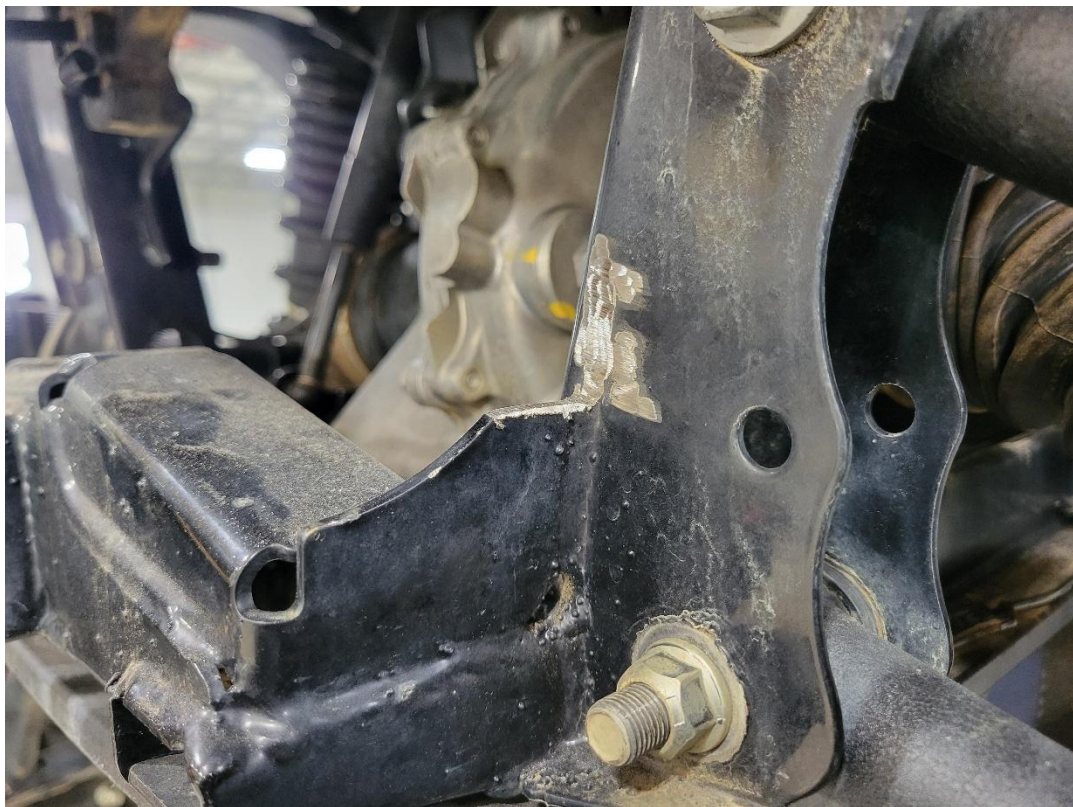
TORQUE SPECIFICATIONS					
INCH SYSTEM			METRIC SYSTEM		
Bolt Size	Grade 5	Grade 8	Bolt Size	Class 8.8	Class 10.9
5/16	180 in-lbs	240 in-lbs	6MM	60 in-lbs	108 in-lbs
3/8	30 ft-lbs	35 ft-lbs	8MM	216 in-lbs	23 ft-lbs
7/16	45 ft-lbs	60 ft-lbs	10MM	32 ft-lbs	45 ft-lbs
1/2	65 ft-lbs	90 ft-lbs	12MM	55 ft-lbs	75 ft-lbs
9/16	95 ft-lbs	130 ft-lbs	14MM	85 ft-lbs	120 ft-lbs
5/8	135 ft-lbs	175 ft-lbs	16MM	130 ft-lbs	165 ft-lbs
3/4	185 ft-lbs	280 ft-lbs	18MM	170 ft-lbs	240 ft-lbs

Pioneer 1000-3/1000-6 Install:

Step 1. (Test Fit Bumper) The first thing you need to do is remove the nut on the rear upper control arm so that the bumper can be installed on the bolt holding the rear control arm to the frame. On some models you will need to trim the receiver hitch gusset slightly so that our TTC Rear Winch Bumper will clear and bolt up properly. First, test fit the bumper to see if it interferes with the receiver hitch gusset. If no interference is present, continue on to final installation of the bumper.



Step 2. (Trim Receiver Hitch Gusset) If your model has gussets that interfere with the bumper, you will need to trim the top part of the gusset off for clearance. Mark the gusset like the picture below and trim with a cut-off wheel, grinding disk, or Sawzall.



Step 3. (Finish Installation) Once the receiver gusset is trimmed and the bumper fits without interference, dust a few sprays of black paint on the bare metal area of the frame that was just trimmed, and finish installing the bumper with the supplied hardware.

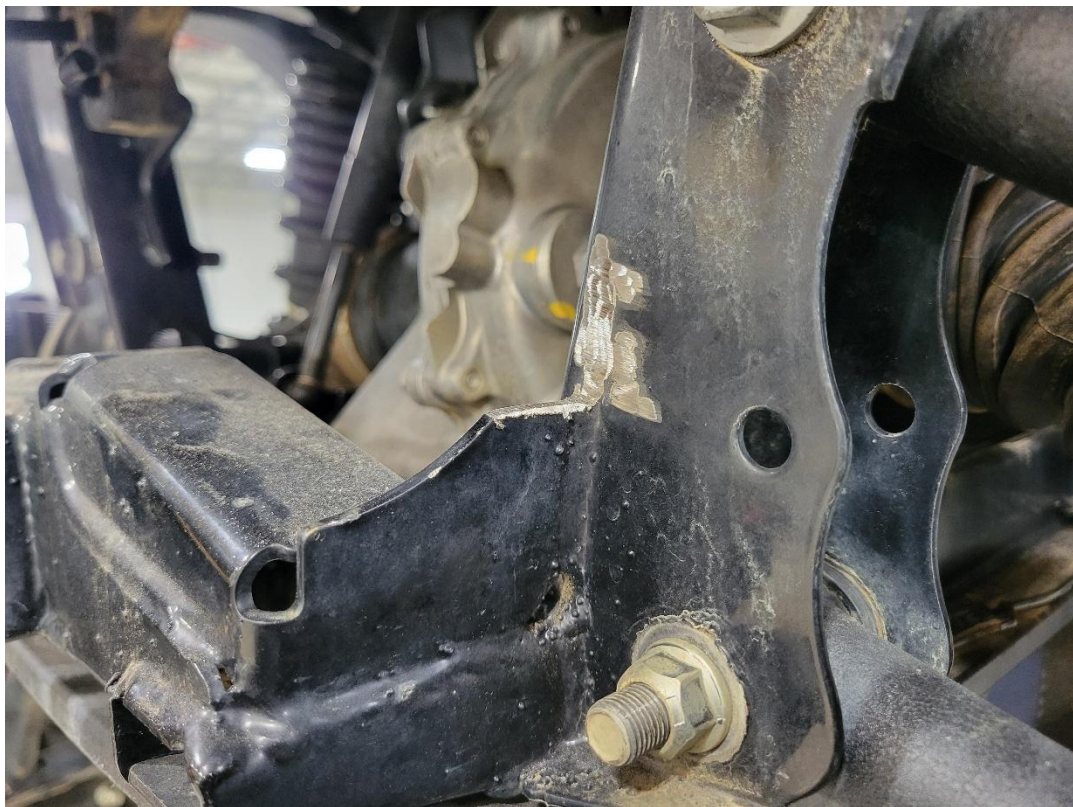


Pioneer 1000-5 Install:

Step 1. (Test Fit Bumper) The first thing you need to do is remove the nut on the rear upper control arm so that the bumper can be installed on the bolt holding the rear control arm to the frame. Also remove the nuts and bolts holding the rear roll cage to the frame. The bumper is meant to be mounted between the cage and the frame of the buggy. On some models you will need to trim the receiver hitch gusset slightly so that our TTC Rear Winch Bumper will clear and bolt up properly. First, test fit the bumper to see if it interferes with the receiver hitch gusset. If no interference is present, continue to final installation of the bumper.



Step 2. (Trim Receiver Hitch Gusset) If your model has gussets that interfere with the bumper, you will need to trim the top part of the gusset off for clearance. Mark the gusset like the picture below and trim with a cut-off wheel, grinding disk, or Sawzall.



Step 3. (Finish Installation) Once the receiver gusset is trimmed and the bumper fits without interference, dust a few sprays of black paint on the bare metal area of the frame that was just trimmed, and finish installing the bumper with the existing hardware. You will reuse all of the factory bolts that hold the cage to the frame. Sometimes it is necessary to use an alignment pin to get the holes to line up to install the bolts.



Don't hesitate to give us a call if you have any questions during your installation. 936-581-2948